



United States Department of the Interior



BUREAU OF LAND MANAGEMENT
Prineville District Office
3050 NE 3rd Street, Prineville, Oregon 97754
blm.gov/office/Prineville-district-office

EMERGENCY PUBLIC LAND CLOSURE

AGENCY: Bureau of Land Management, Prineville District, Oregon.

ACTION: Temporary Closure of Public Lands

SUMMARY: Pursuant to 43 CFR 8364, the Bureau of Land Management (BLM) hereby provides notice that effective immediately, the public lands described below are closed to all forms of public access. This action is in response to a fire currently active in the area. The BLM is closing public lands to reduce conflicts with emergency crews and allow for fire suppression and to ensure public safety, land health, and resource integrity.

AFFECTED AREA: The following BLM-managed lands in Wheeler and Grant Counties are affected by this closure:

- All BLM-administered lands along the main stem John Day River corridor from Service Creek to Kimberly, OR.
- All BLM administered lands along the North Fork John Day River from Kimberly, OR to Dale, OR.

DATES: This closure is effective immediately and will remain in effect until such time as conditions allow for safe use of the public lands.

FOR FURTHER INFORMATION CONTACT: The Prineville District Front Desk, at 541-416-6700
BLM_OR_PR_Mail@blm.gov. This notice and the closure notice will be available online.

DISCUSSION OF THE RULES: All uses within the area are prohibited. Exceptions to these prohibitions are noted below under Exemptions. Incidents of dangerous fire behavior have been observed throughout the District.

EXEMPTIONS: The following persons are exempt from the provisions of this Order:

1. Any Federal, State, or Local Officer, or member of an organized medical, rescue or firefighting force engaged in fire, emergency, or law enforcement activities, or public utility employees engaged in emergency repairs.
2. BLM employees, contractors, or agents engaged in official duties.
3. Individuals operating within the scope of their official and legitimate governmental duties.
4. Individuals with valid existing rights for access (e.g., Reciprocal and Unilateral Right of Way agreement holders, permittees or lease holders, or internal landowners); and
5. Parties who carry written approval by the BLM Authorized Officer (Field Manager or District Manager) allowing access to the described public lands.

PENALTIES: Any person who violates this may be tried before a United States Magistrate and fined in accordance with 18 U.S.C. 3571, imprisoned for no more than 12 months, or both. Vehicles found in violation of this order may be removed.

EFFECTIVE: This Order is effective immediately upon signature.

MICHAEL DECKER Digitally signed by MICHAEL DECKER
Date: 2024.07.20 15:05:49 -07'00'

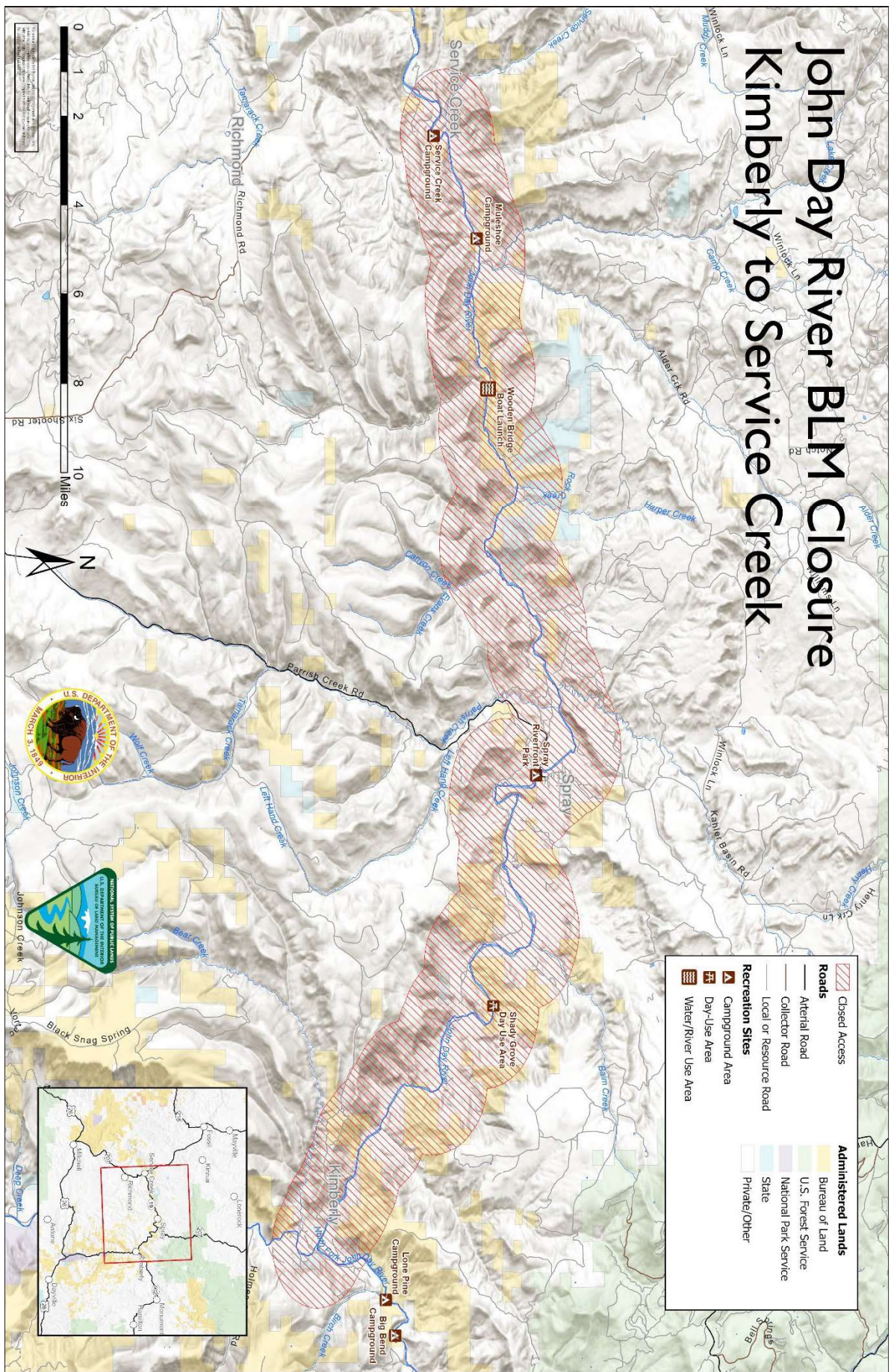
District Manager (Acting), Prineville District

Date

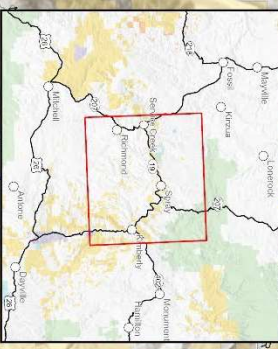
INTERIOR REGION 9 • COLUMBIA-PACIFIC NORTHWEST
IDAHO, MONTANA, OREGON*, WASHINGTON
* PARTIAL

John Day River BLM Closure

Kimberly to Service Creek



Roads	
	Closed Access
	Atterial Road
	Collector Road
	Local or Resource Road
Recreation Sites	
	Campground Area
	Day-Use Area
	Water/River Use Area
Administered Lands	
	Bureau of Land
	U.S. Forest Service
	National Park Service
	State
	Private/Other



John Day River BLM Closure Dale to Kimberly

